

FY 2013 MAINTENANCE DREDGING

PROJECT: Mississippi River
 Baton Rouge to the Gulf, LA.
 REACH: New Orleans Harbor
 PROJECT MANAGER: Michelle Spraul
 PHONE: (504) 862-1842
 LOCAL SPONSOR: State of Louisiana

DESCRIPTION OF WORK:

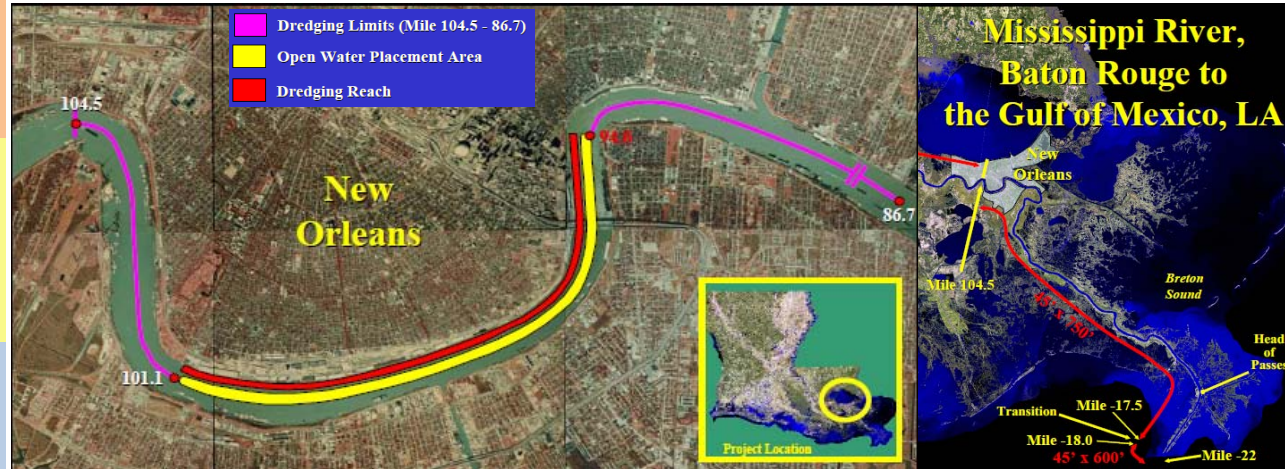
Project depth varies from -15' to -85' MLG starting 100 feet from face of wharves on left descending bank typically between Mile 94.6 and 101.1 AHP.

HISTORICAL DREDGING FREQUENCY: Annual
 LAST DREDGED: 2012
 TYPE OF DREDGE: Cutterhead/Water Injection
 ESTIMATED QUANTITY: 1,000,000 CY
 ESTIMATED COST: \$4,000,000

ADVERTISE: Nov 2012
 OPEN BIDS: July 2013
 AWARD: July 2013
 START WORK: July 2013
 DURATION: 1 Month (Contract)

DREDGING REACH: New Orleans Harbor
 DISPOSAL AREA: Mississippi River
 DISPOSAL TYPE: Open Water
 REMARKS: Dredged material discharged beyond -50' depth contour

MISSISSIPPI RIVER, BATON ROUGE TO THE GULF NEW ORLEANS HARBOR



PROJECT AUTHORITY: River and Harbor Acts of 1945, Sec 2 (PL 79-14) and 1962, Sec 101; (PL 87-874); Supplemental Appropriations Act of 1985, (PL 99-88); and WRDA of 1986, Sec 201 (PL 99-662).

NEPA DOCUMENTATION	FONSI	PUBLIC NOTICE	WATER QUALITY CERTIFICATION	
FEIS 40-foot channel	19-Jul-74	18-Oct-74		12-Dec-78
FEIS Supplement I	19-Mar-76			
FEIS Deep Draft	2-Jul-82	31-May-84	DNR 840504-09	4-Jun-84
FEIS Supplement II	1-Mar-85	14-Jun-84	DNR 840629-09	9-Aug-84
SIR #14 Advance Maintenance & Allowable Overdepth	10-Dec-85			
EA #68 Crossings & N.O. Harbor	17-Dec-87	1-Nov-85	WQC 851025-10 WQC 851025-10*	10-Mar-86 11-Mar-87

* revised Water Quality Certificate

Recent Dredging History Of Mississippi River – New Orleans Harbor

Fiscal Year	Disposal Area	Dredging Quantity (CY)
2001	Open Water	1,313,108
2002	Open Water	940,843
2003	Open Water	1,042,612
2004	Open Water	884,503
2005	Open Water	831,644
2006	Open Water	876,420
2007	Open Water	1,228,325
2008	Open Water	731,611
2009	Open Water	1,003,483
2010	Open Water	1,106,763
2011	Open Water	675,266
2012	Open Water	TBD

